



BUILDING NO.4
2 & 3 BHK HOMES, KOTHRUD PUNE



Life with the
TOUCH OF NATURE.



Life with the
TOUCH OF NATURE.



BUILDING NO.4
2 & 3 BHK HOMES, KOTHRUD PUNE



A watercolor splash graphic with a color gradient from pink to yellow, centered on the page. The splash has irregular, organic edges and is layered, with some colors appearing more saturated than others. It is set against a background of a bright blue sky with soft, white clouds.

Lush Life

Peaceful Surrounding

Evergreen Spirit

Ultimate Lifestyle

Vibrant Nature

Healthy Environment

Magnificent View

Natural Scenery



Here
**Peace
and Luxury**
live together



In a decade the world has changed a lot. What has not changed is this part of Kothrud-Ved Vihar. Well known to the PuneKars for its luxurious and peaceful location, Ved Vihar is back with the bang. Presenting the Ved Vihar- Building No. 4.

Over the span of a decade, Ved Vihar has established itself as a landmark of the vicinity, nestled in the beautiful green area of Kothrud, and a recipient of numerous accolades like the prestigious 'Artists in Concrete' award by Loksatta Vasturang and many more.

To keep this legacy alive, Rohan Pate Construction LLP, associated with Amit Enterprises Housing Ltd, is now introducing an opportunity to become a part of Ved Vihar. A perfect blend of modern construction, traditional values and beautiful nature, Ved Vihar offers a life of unparalleled tranquility and peace with easy access to the fast paced world just outside the threshold.

Keeping alive the
traditions of
tranquil living



BUILDING NO.4
2 & 3 BHK HOMES, KOTHRUD PUNE





Natural colours
to paint the
canvas
of your life !

Rich colors of nature enhance your life more with each passing day in Ved Vihar- Building No. 4. Gorgeous views and breathtaking, lush surroundings adorn your life with the glow of nature's beauty.

Clever Homes for a **comfortable life**

Crafted to provide you with a life of peace, so close and yet far from the busy world outside, Ved Vihar has gorgeous and thoughtfully designed 2 and 3 BHK apartments that will make your lifestyle dream a reality.

Ved Vihar offers all the comforts required for a blissful life like quality construction, elegant and modern building design with breezy surroundings. In addition it has modern amenities like landscaped gardens, a play area, a vast multistory parking area and many more, along with superb connectivity and gorgeous, lush environment.



*Artistic Rendition. Actual site may differ.



A life
harmonized with
tunes
of nature!

Wake up each day to the melodious sound of nature with Ved Vihar- Building No. 4. Let the sweet songs of birds, the swish of the trees and the sounds of the gentle breeze enlighten your life and let you start your day with a smile.





Amenities

- ▶ Club House with seat-outs
- ▶ A community/ Multipurpose Hall with a stage
- ▶ Party lawn
- ▶ Children's Play area with play equipment
- ▶ Senior Citizen's plaza with seating.
- ▶ Well Equipped Gymnasium
- ▶ Table Tennis Hall
- ▶ Gazebo with seating
- ▶ Swimming Pool
- ▶ Toddlers pool
- ▶ Practice Volley Ball court
- ▶ Joggers Track
- ▶ Landscape Garden

Modern comforts for **perfect lives**

Ved Vihar is well equipped with a plethora of modern amenities to enhance the lifestyle experiences of its residents and provide them the best comforts they could ask for.



*Artistic Rendition. Actual site may differ.



Equipped for **class**

All the flats in Ved Vihar-Building No. 4 are built with state-of-the-art specifications that complement the classy lifestyle of its residents.



Specification

FLOOR FINISHES

- ▶ Living/Dining/Bedrooms/Kitchen – Vitrified Tiles
- ▶ Terrace, Toilets & Dry Balcony – Antiskid Tiles

KITCHEN PLATFORM

- ▶ Kitchen Platform – Granite Kitchen Platform

DADO

- ▶ Kitchen Platform – Tile dado 2' above
- ▶ Toilets –Tile dado up to lintel level

DOORS

- ▶ Main Door –Both side Laminated designer flush Door
- ▶ Other Doors – Both side Laminated flush Door
- ▶ Attached Terrace Doors – Anodized aluminum
- ▶ Sliding doors with Mosquito mesh.

WINDOWS

- ▶ Sliding Windows – Anodized Aluminum Sliding windows with Mosquito mesh
- ▶ Windows sills – Granite Windows sills

CP & SANITARY FITTINGS

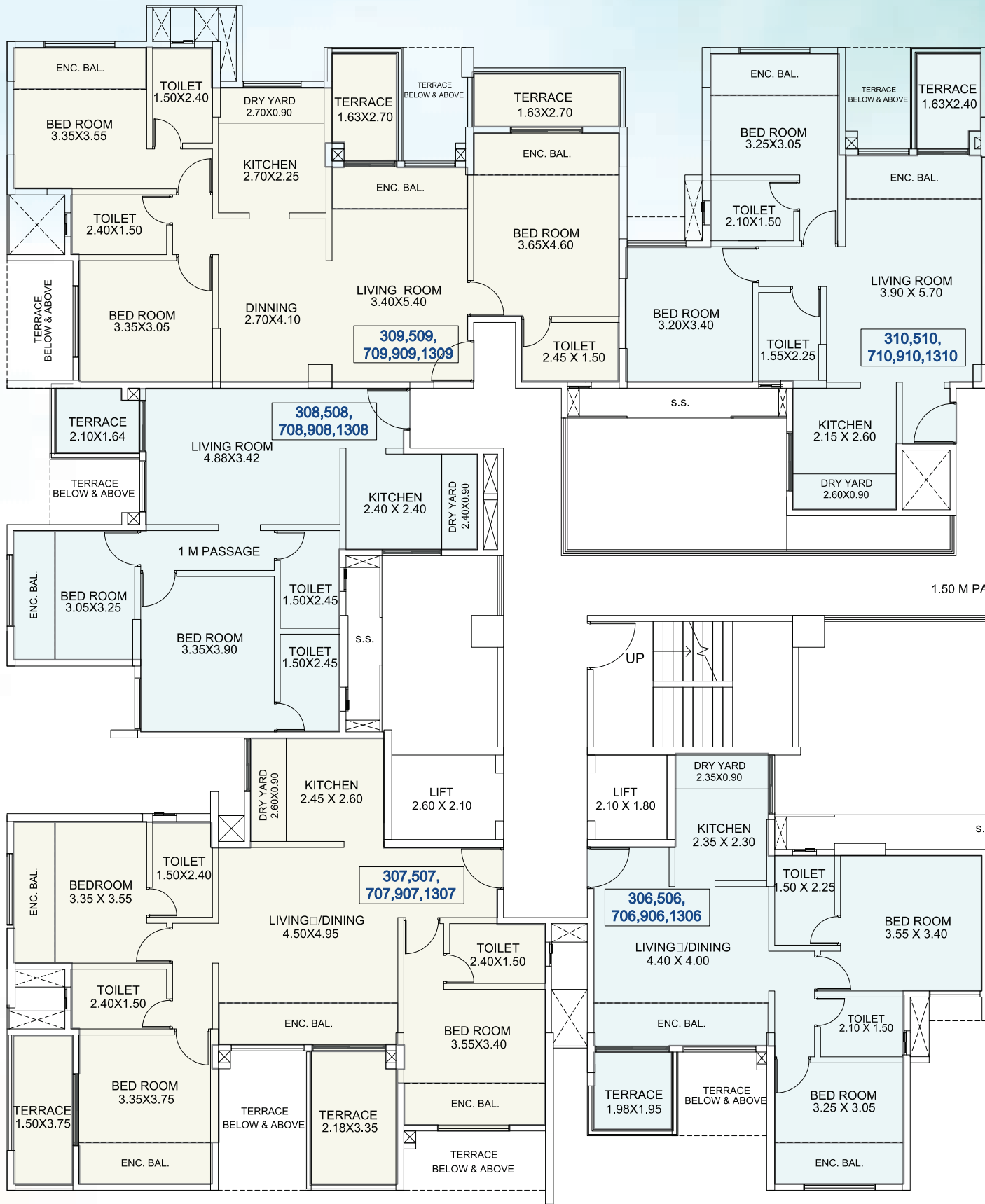
- ▶ CP Fitting – Standard Fitting
- ▶ Sanitary Fittings – Standard Fitting

WALL FINISH

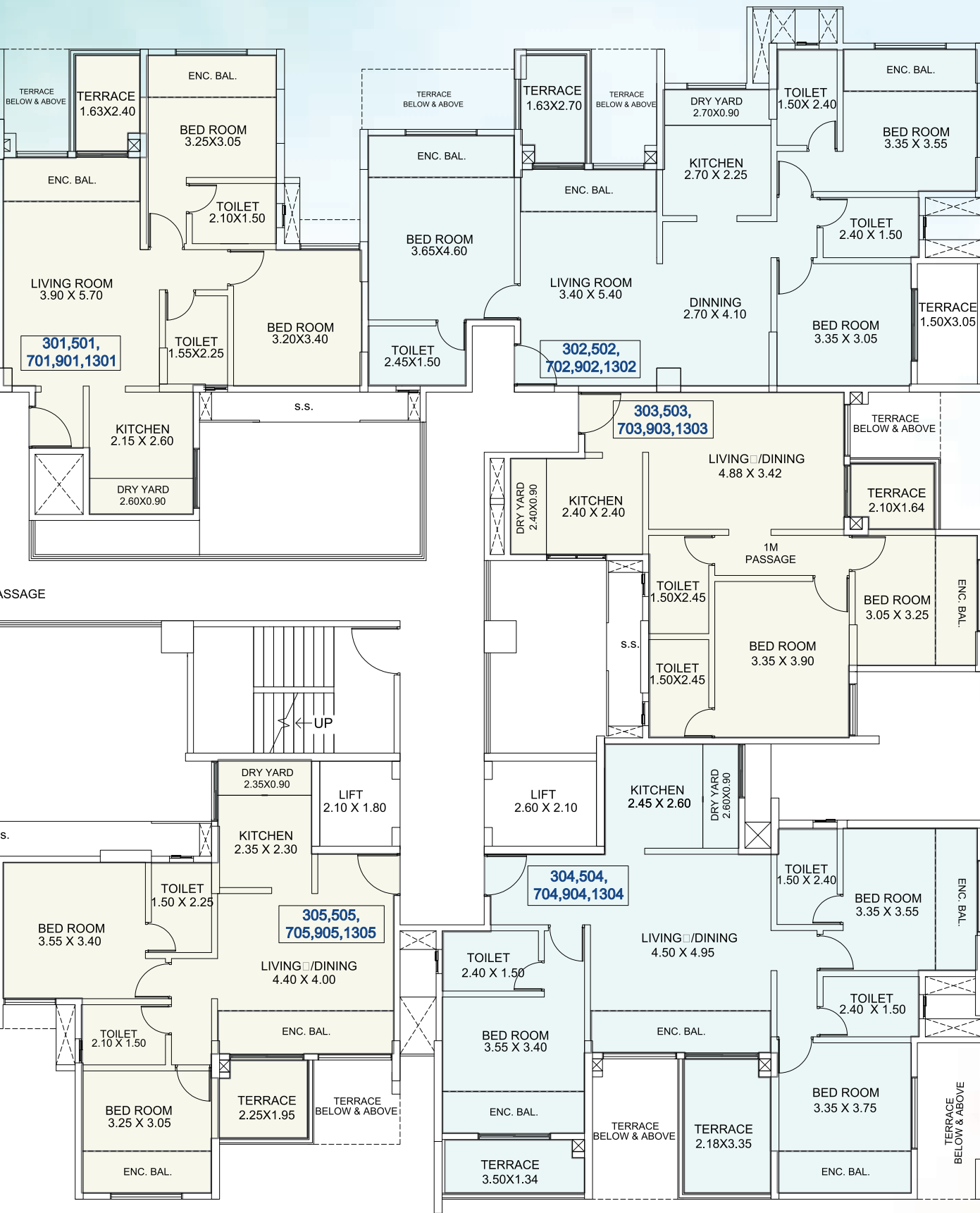
- ▶ Internal – Gypsum Plaster with Paint
- ▶ External walls – Double coat Plaster with Paint

ELECTRICAL

- ▶ Switches – Modular Switches of standard make
- ▶ TV – Points in living & all Bedrooms
- ▶ AC provision – in all Bedrooms



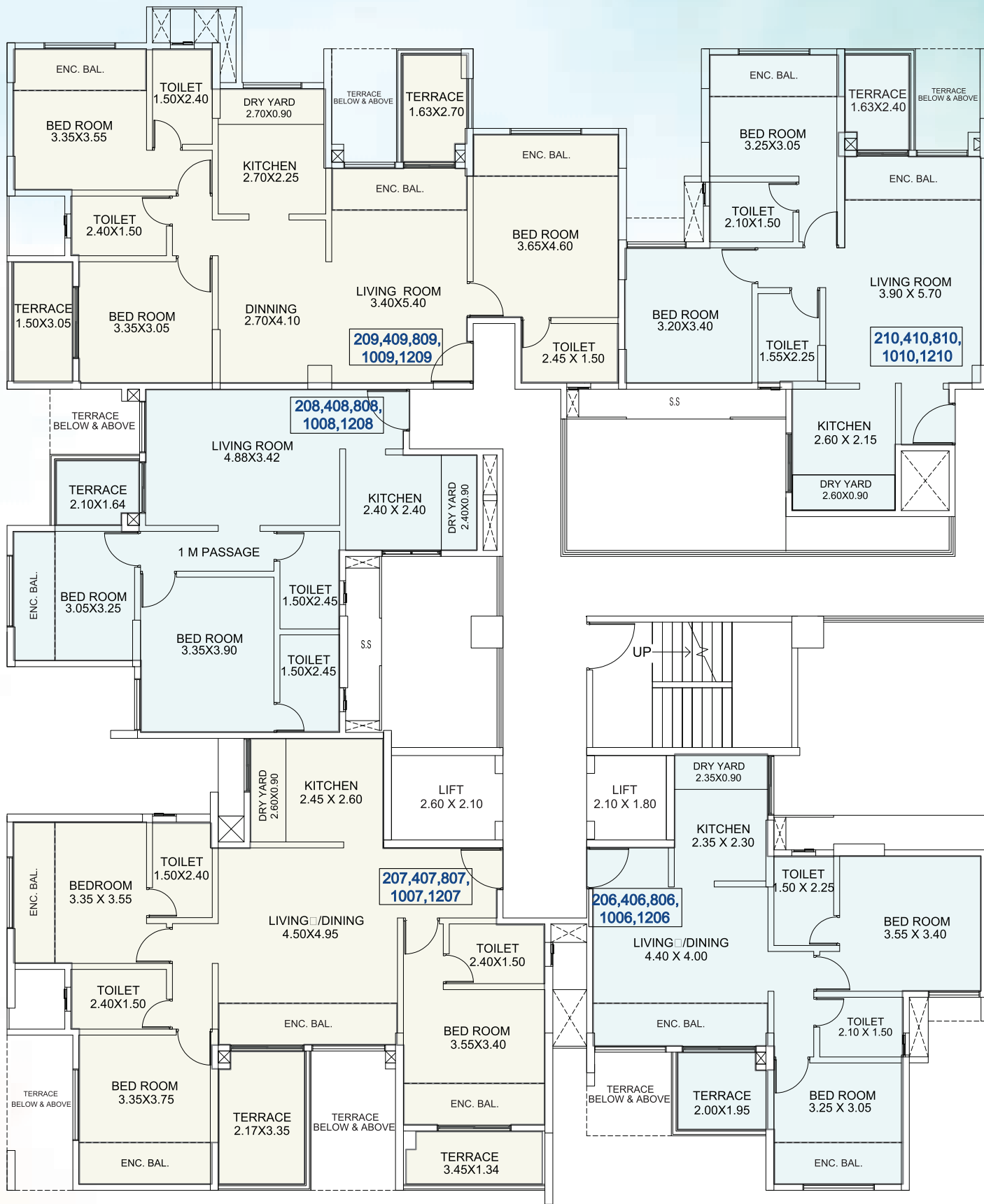
Ved Vihar Building No.4
Odd Floor Plan



Sr. No.	Apartment Type	Flat No.	Flat Carpet Area 'A'	Enclosed Balcony Area 'B'	Terrace Area 'C'	Total A+B+C
1	2 BHK (Type 12)	301, 501, 701, 901, 1301	57.57	7.25	3.66	68.48
2	3 BHK (Type 8)	302, 502, 702, 902, 1302	84.93	10.93	8.61	104.47
3	2 BHK (Type 11)	303, 503, 703, 903, 1303	60.72	3.34	3.2	67.26
4	3 BHK (Type 7)	304, 504, 704, 904, 1304	76.39	16.01	11.41	103.81
5	2 BHK (Type 10)	305, 505, 705, 905, 1305	53.54	8.25	4.2	65.99
6	2 BHK (Type 9)	306, 506, 706, 906, 1306	53.28	8.32	3.8	65.4
7	3 BHK (Type 6)	307, 507, 707, 907, 1307	76.41	15.74	12.53	104.68
8	2 BHK (Type 8)	308, 508, 708, 908, 1308	60.42	3.34	3.2	66.96
9	3 BHK (Type 5)	309, 509, 709, 909, 1309	84.72	11.22	8.96	104.9
10	2 BHK (Type 7)	310, 510, 710, 910, 1310	57.41	7.25	3.66	68.32

(Area in Sq. Mt.)





Ved Vihar Building No.4
Even Floor Plan



Sr. No.	Apartment Type	Flat No.	Flat Carpet Area 'A'	Enclosed Balcony Area 'B'	Terrace Area 'C'	Total A+B+C
1	2BHK (Type 7)	201,401, 801,1001,1201	57.41	7.25	3.66	68.32
2	3 BHK (Type 5)	202, 402,802,1002,1202	84.72	11.22	8.96	104.9
3	2 BHK (Type 8)	203, 403 803,1003,1203	60.42	3.34	3.2	66.96
4	3 BHK (Type 6)	204, 404, 804,1004,1204	76.41	15.74	12.53	104.68
5	2 BHK (Type 9)	205, 405, 805,1005,1205	53.28	8.32	3.80	65.4
6	2 BHK (Type 10)	206, 406, 806,1006,1206	53.54	8.25	4.2	65.99
7	3 BHK (Type 7)	207, 407, 807,1007,1207	76.39	16.01	11.41	103.81
8	2 BHK (Type11)	208, 408, 808,1008,1208,	60.72	3.34	3.2	67.26
9	3 BHK (Type 8)	209, 409, 809,1009,1209	84.93	10.93	8.61	104.47
10	2 BHK (Type 12)	210, 410, 810,1010,1210,	57.57	7.25	3.66	68.48

(Area in Sq. Mt.)



Landmark in the vicinity



Mumbai-Pune Highway (NH48) - 0.5 km

Lohia Jain IT Park - 1.4 km

Hinjewadi IT Park - 15.9 km

Ambrosia Resort and Spa - 3.2 km

The project's location adds a big convenience to the flat owners being situated close to Lohia Jain IT Park, Hinjewadi IT Park, malls, renowned hospitals, educational institutions, cultural hub, entertainment and recreational areas that includes theaters, gardens, picnic spots and much more.



Sahyadri Hospital - 3.1 km

Ryan International School - 2.7 km

MIT College - 5.2 km

Pancard Club - 10.2 km

Committed
to Excellence





Started in 2016 after years of hard work, passion and dedication, by Rohan Kishor Pate, Rohan Pate Constructions LLP in itself is a brand identity; promising the values and culture that has been followed for decades. Contributing it's business ideas and successful plans to more than 30 successful projects under the umbrella brand of Amit Enterprises, Rohan Pate Constructions then decided to come up with their debut project namely Ved Vihar in the heart of Kothrud, Pune. Under the vision, directions and guidance of Rohan Pate, the group has successfully launched its debut project and soon will be establishing more such marks of creation across the city.

POWERED BY



Amit Enterprises Housing Ltd (AEHL) is known to be one of the top property builders in Pune since 1983. Having completed over 70 successful residential and commercial real estate projects in Pune, Amit Enterprises is committed to providing their customers a better lifestyle. With passion to work, innovative ideas and cutting edge technology, AEHL strives to add value to the lives of its customers and truly live up to its motto - Built For More.

www.amitenterprises.com

www.amitenterprises.com



POWERED BY



Site Office:

Mumbai Pune Bypass Rd, Bhusari Colony, Kothrud, Pune, Maharashtra 411038.

Corporate Office:

Amit House, 1902 Bajirao Road, Sadashiv Peth, Pune-411 030

+91 9922998909 | sales@amitenterprises.com

MAHARERA REG. NO: BUILDING 4: P52100012713

<https://maharera.mahaonline.gov.in/>



The plans, specifications, images and other details here in are only indicative and the developer/owner reserve the right to change any or all. The printed material does not constitute a contract / offer of any type between the developer / owner and the recipient. The Purchaser is advised to peruse the RERA website as the Project is being developed in phases (<https://maharera.mahaonline.gov.in/>). The details of windows, paints, elevation landscaping ground development trees etc. are an Artists impression and may differ on actual construction. The delivery of the products will be as per the mutually agreed list of amenities which will be finalized with the purchaser individually and mentioned in the agreement